



Sunsight™

Alignment Solutions



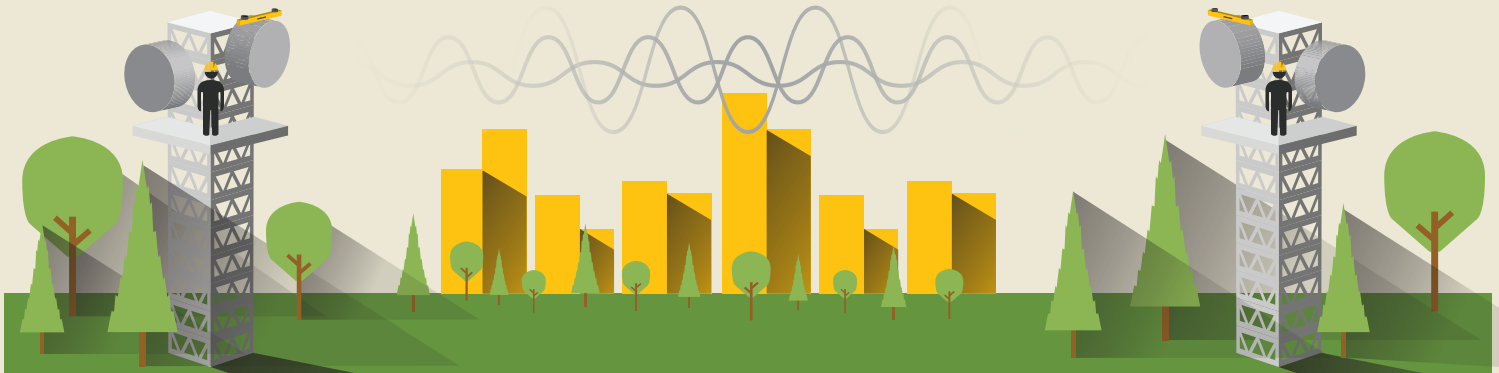
Tel: +1 (321) 244-9443

sales@sunsight.com

Sunsight Microwave Path Alignment Kit

Real Time End-to-End Path Alignment System

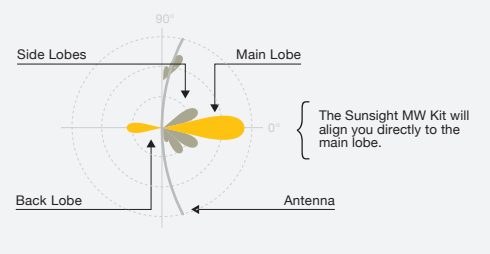
- ✓ Kit determines the required path alignment automatically, eliminating potential errors
- ✓ Frequency and distance independent, Link can be aligned with or without radios installed or powered
- ✓ Two alignment units allow for simultaneous alignment of both sides of a link in minutes
- ✓ Additional USB-C Cable interface allows MW use in RF interference environments
- ✓ Can also be used to align one end of the link at a time, eliminating the need for multiple crews
- ✓ Each unit can operate as a Directional (ex. Cellular panel antenna) alignment tool
- ✓ A new easy-to-use icon-based interface minimizes learning curves and language barriers
- ✓ 3-year warranty standard
- ✓ No annual maintenance or calibration requirement



The system automatically calculates exact alignment using known positional data in real-time and provides the user simple targets for aligning the link. No signal, power, or frequency is needed for SunSight's innovative pathing process.

Technical Specifications

Azimuth		Accuracy
RMS		+/- .15
R95		+/- .3
R99		+/- .5 degree
GPS Receiver Channels		1408
Satellite Constellations		GPS L1C/A/L2P (Y)/L2C BDS B1I/B2I/B3I, GLONASS G1/G2, Galileo E1/E5a/E5b, QZSS L1/L2
Tilt and Roll Range		+/- 22.5 degrees
Tilt and Roll Accuracy		.1 degree *
Horizontal Accuracy (ft)		1
Vertical Accuracy - MSL (ft)		3
Unit Dimensions		
Side		26 x 3 x 2.6"
Weight		4.5 lbs.
Battery:		
Type		LiFePo4
Life		10 hours
Charge Time		80 mins
Environment and Connectivity:		
Op Temp		-30 to +60 c
Storage Temp		-30 to +60 c
Humidity		95%
Communications		Wifi, USB-C
Output		PDF, CSV, Google Earth (KML)
Environmental		IP65



*.1 degree accuracy from 0 to +/- 10 degrees, .2 degrees from +/-10.1 to +/-A22.5 degrees

What's Included

Part #	Description
MW Kit	Directional (ex. Cellular Panel) and Microwave Path Alignment (Includes 2 MW/AAT Units, 2 Side Mounts, 2 Universal Microwave Mounts, 2 Handheld Devices, 2 Smart Levels, 2 USB-C Cables, 2 Battery Chargers, and 2 Hard Cases)
MW Single Unit	Directional (ex. Cellular Panel) and Microwave Path Alignment (Includes MW/AAT Unit, Side Mount, Universal Microwave Mount, Handheld Device, Smart Level, USB-C Cable, Battery Charger, and Hard Case)
Flat Panel Antenna Mount	For aligning Flat Panel Antennas (ie. Radwin 5000 JET Base Station)